


Phillip Woolway, *We have been waiting a while*



Chapel Gallery

Exhibition Programme

January - November 2012



Sally Waterman, *The Other Side of the Mirror*

WELCOME

own art

Welcome to the Chapel Gallery's programme of exhibitions, touring shows, special events, educational workshops and creative activities for all..



Barbara Macleod, *Brooch*

The **exhibition programme** brings together established and emerging artists from across the UK, providing themed group shows and introducing specialist touring exhibitions to the area.

Our **Art Club, Holiday Activities, Family Friendly Events** and **Adult Learning Courses** mean that, no matter what your age or ability, you'll find something at the Chapel Gallery to get your creative juices flowing.

Our popular **Contemporary Craft Shop** is a jewellery specialist with around thirty independent jewellers represented. We also offer gorgeous designer/maker made ceramics, glass, metal, textiles, prints and paperworks, with a wide selection of cards and giftwrap. Watch out for our online shop at www.chapelgallery.org.uk.



Sanders & Wallace,
Red Veil Bottle

A visit would not be complete without sampling the delicious fare on offer in our **Café**, a quality service provided by Hunkie Dorrie. Hospitality is also available for functions, room hire and art parties.

EXHIBITIONS

Smile: 21 January - 17 March 2012



Lucy Casson

'Smile' is a simple but emotive word, and it's this little word with big connotations that links works by fourteen leading contemporary applied artists in this group show.

Here is a witty, warm and playful exhibition; in fact, we challenge you not to break into a grin while exploring Smile.

Smile is a national touring exhibition organised by Ruthin Craft Centre.

Exhibiting artists:

Mike Abbott & Kim Ellwood, Julie Arkell, Janet Bolton, Lucy Casson, Michael Flynn, Eleanor Glover, Jo Lawrence, Lindsey Mann, Linda Miller, Craig Mitchell, Deirdre Nelson, Robert Race and Freddie Robins.



Robert Race

Journeys: 24 March – 5 May 2012

From the epic to the intimate, fifteen contemporary artists exhibit work that relates to journeys, whether the discoveries of global travellers or imaginative voyages of the mind.

Through media such as print, painting, installation and film, these artists critique the ways in which humankind is perpetually on the move.



Stephen Clarke, *Postcard 18*



Rebekah Tatlow, *Höfði House, Reykjavik*

Exhibiting artists: Stephen Clarke, Jean Davey Winter, Gerry Halpin, Joanna Kinnersly-Taylor, Carole King, Hannah Leighton-Boyce, Rachel Marsh, Jenny Pope, Amy Russell, Catriona Stamp, Rebekah Tatlow, Andrew & Caitlin Webb-Ellis, Claire Weetman and Wendy Williams.

Wrexham Print International: 12 May - 7 July 2012



Penelope Kenny, *GMK*

What is printmaking today? This exhibition provides an insightful response to this question by bringing together artists from countries and cultures as diverse as Japan, Poland and the UK.

It is clear from the selection exhibited that print is an ever-evolving medium, one that welcomes innovation while respecting the rich history and diverse techniques encompassed by the discipline.



Yuji Hiratsuka, *Deliberation*

West Lancashire OPEN Exhibition 2012:

21 July - 19 September 2012

This annual exhibition celebrates the wealth of artistic talent to be found in the region and across the UK. For established professional artists, through to students and amateurs with ambition, this is an excellent opportunity to exhibit in the main space at the Chapel Gallery.

Here is an open in the true sense of the word - open to all, any media, subject or level of experience. It's a richly diverse exhibition with something for all to appreciate.

Entry Form: Contact the gallery to request an Entry Form from April.

Prizes: Prizes will be awarded to winners at a special Preview event. These include First Prize, Second Prize and Third Prize overall winners plus prizes for Best Landscape and Best Portrait.



West Lancashire OPEN Exhibition 2011

The Uncanny: 29 September - 17 November 2012



Amanda Palmer, *By Candle Light*

On exploring this exhibition visitors might experience a peculiar sensation, the unsettling feeling that something isn't quite right or that an artwork is not at all what it seems...

The notion of uncanny has long provided a source of inspiration for artists and continues to fascinate many working today. This exhibition brings together thirteen such artists, from across the UK, who explore ideas associated with the uncanny, from generating an eerie sense of unease to acknowledging the motifs and techniques advocated by Surrealism.

Exhibiting Artists: Jane Barwood, Ruth Fuller, Barbara Jones, Linda Lencovic, Anja Lubach, Amanda Palmer, Kirsty E Smith, Holly Stevenson, Jacki Storey, Sally Waterman, Caroline Watson, Teresa Wilson and Phillip Woolway.



Kirsty E Smith, *Tall Legs*

SHOWCASES

Michael Lowey: 14 January - 10 March 2012

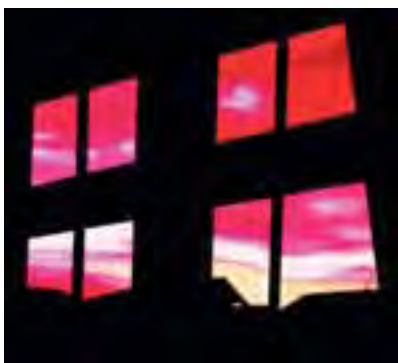
This is a showcase of sensitively produced photography, each image expertly resolved.

Michael Lowey is a master of traditional analogue photography and has embraced digital techniques in order to produce these images. The result is a body of work depicting landscape compositions that are richly atmospheric.



Michael Lowey, *Human Impact*

David Lunt: 17 March - 28 April 2012



David Lunt, *Pure Morning*

David Lunt exhibits a collection of paintings characterised by dramatic skies, bold pigments and ambiguous narratives.

This showcase explores the role of the painter in a post-digital age as Lunt creates work that blends the cinematic image, new technologies within painting, a love of landscape and a gothic sensibility.

John Zehentner: 5 May - 7 July 2012

John Zehentner is the winner of the Peoples' Prize 2011, voted for by visitors to the West Lancashire OPEN Exhibition 2011. His prize is this showcase opportunity and an exhibition fee.



John Zehentner, *A Bit of Tea and Sympathy*

He exhibits a collection of thoughtful, perceptive and exquisitely realised paintings that depict a range of figurative subjects, often with a bittersweet subtext.

Entry Form: Contact the gallery to request an Entry Form from April.



Peter Slight, *Moolit Tea Party*

Here, he delivers an exhibition that is an imaginative playground inhabited by strange 3D beasts and illustrations that tell stories with real wit and warmth.

Peter Slight:

29 September -
10 November 2012

Peter Slight's work demonstrates a fascination with folktales and fables, 60s and 70s design, the woodlands and nature.

Little Red Squirrels



EVENTS

The Big Draw!

Half-Term

Tuesday 30 October 2012

Bring the whole family to the Chapel Gallery to make a bold and brilliant artwork together.

This is a free family friendly event where the focus is fun.



Gisella-Graham, Candle-Holder



Chapel Gallery Christmas Event 2012

Friday 30 November and Saturday 1 December 2012

Calling all artists and contemporary craft makers...

Interested in selling your work direct to the public at our popular two day event on Friday 30th November and Saturday 1st December? Then contact the gallery for an application form.

Cultural Olympiad Events

For 2012 we have planned a number of activities and workshops that will introduce you to a wealth of cultural experiences. Look out for our programme beginning June 2012.

Youth Open 2012, People & Places

17 November 2012 - 5 January 2013



The Chapel Gallery's annual Youth Open is always a favourite with visitors. So if you know any talented young artists, aged 18 or under, who'd like to submit an art work for inclusion, get in touch to request an Entry Form.

This year's theme is People & Places and your art work should be no larger than A3 and two-dimensional. Artwork delivery deadline: 3 November 2012.

Prizes: Prizes will be awarded to winners at a special Preview event

EDUCATION & ACTIVITIES

Education Workshops

The gallery offers a broad programme of educational tours, artist talks and organised discussions to accompany each exhibition.

We also provide a range of workshops aimed at schools and colleges and planned in line with the curriculum. Each includes a short gallery tour followed by a practical workshop where pupils create their own artwork to take back to school.



Family Friendly Activities

Each Saturday a free family friendly activity is provided at the gallery. Drop in if you want to spend a little time getting creative as a family. There are plenty of materials and ideas to inspire you!

Holiday Activities

During each school holiday there are lots of activities planned to ensure young people aged 8 to 16 have plenty to inspire their imaginations and develop creative skills.

We've a fantastic programme facilitated by professional artists that includes visual art, dance, drama and writing workshops.



Art Club

Young Explorers: Age 8 -12

Creative Explorers: Age 13 -18

Young Explorers: sessions facilitated by professional artists. You will develop your skills, creativity and knowledge of the visual arts.

Creative Explorers: for young people with a keen interest in the visual arts. This session offers a greater challenge and a skill based approach to art and design.

Chapel Gallery is a member of the prestigious Arts Council England Arts Award accreditation scheme. Young people from age eleven have the opportunity to work towards a nationally recognised certificate of achievement.



ADULT LEARNING PROGRAMME

Due to the success of our pilot initiative we will be expanding our programme.

Look out for creative opportunities taking place throughout the year, including the ever popular Knit & Natter, life drawing, creative writing, jewellery making, glass making and much more.

Knit and Natter,
Julie James-Turner, *Cupcake*



Hire of Facility

The Chapel Gallery retains many original features, such as stained glass panels, combined with striking lighting features and modern amenities including WiFi throughout.

The venue provides a unique experience and is ideal for special occasions and corporate events. Individual rooms are available for hire, as is the whole facility. Any catering needs can be fulfilled by Hunkie Dorrie, from light refreshments to sumptuous buffets and formal diners.

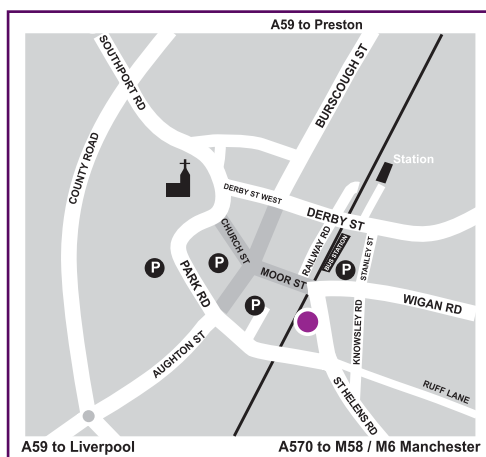
Contact the gallery for further information, to discuss your requirements or to arrange a booking.

Book a Tour

Once a month on a Saturday, the Gallery Officer will provide a free exhibition tour at 11am and 3pm. Extra dates will be available during holiday periods.



Where to find us



For **further information** on anything mentioned in this programme, for **Entry Forms** or to make a **Booking**, please contact the gallery or visit our website:

Chapel Gallery, St. Helens Road, Ormskirk, Lancashire L39 4QR
01695 571328 | chapel.gallery@westlancs.gov.uk
www.chapलगallery.org.uk

Free Admission. Disabled Access. Baby Change Facilities.
Groups larger than 5 should contact gallery staff prior to visit.
Open: Tuesday - Saturday, 10.00am - 4.30pm.
Closed: Sunday, Monday and Bank Holidays.

Chapel Gallery is part of West Lancashire Borough Council's Community Services Division.



We can provide this information on request on audiotape, in large print, in Braille and in other languages.
Contact the PR Unit on 01695 585011.